



Hapeville WI-FI Network Project Status Report



Project Background

- The Hapeville Wireless Network will use wireless mesh technology that will be implemented in a two phased approach Phase A and Phase B.
 - Phase A will cover the Southside of the City 1.5 square miles from I-85 to I-75 (WCG funded),
 - Phase B will cover the North side of the City (primarily residential area) 1.25 square mile. HATT will appropriate the needed funds in subsequent years to be used for the build out of this phase.
- Completing both phases will cover the entire City of Hapeville in wireless access. The total square mileage that the network would cover is 2.75 square miles.

Project Highlights

- WABE aired a piece about Municipal Wireless in the Atlanta Metro area, which highlighted the Hapeville's Wireless network, along with Decatur's as well.
- The South Fulton Neighbor ran an article about the Hapeville Wireless network on June 11th, 2008.
- GTA and the Georgia Department of Administrative Services sold the City of Hapeville 5 Pentium 4 laptops for \$50 to be used for the Wi-Fi network or internal city use.

Infrastructure Build out and Verification Phase

- The City and HATT are currently in the process of securing the rights of way acquired and getting the necessary permission for vertical asset installation. Still, awaiting approval from Delta and Best Western for use of their buildings.
- All equipment has been ordered and received by VC3, Inc.
- The Backhaul link between City Hall and Fire Station 2, 2 RAPs (1522), 2 Ligowave Sectors has been mounted and installed.
- Georgia Power Pole Applications have been submitted to GA Power; waiting on permits.
- The 60 ft tower that needed to be installed at the Police Department in order to have line of site between there and City Hall has been changed to an 80 ft tower.

Infrastructure Build out and Verification Phase cont.



City Hall



Infrastructure Build out and Verification Phase cont.



Fire Station #2



Budget

- The total cost of the **CAPEX** (Capital Expenditures) has been decreased from \$449,009.00 to \$419,176.81. This is an increase from the last CAPEX reported on 5-09-2008 of \$401,400.71.

***This new CAPEX amount reflects the increase due to expanding the network to the Cofield Park, Parkway/Old Jonesboro/Ball Park area, and the upgrade to the PD tower.**

- Will not have final numbers on make-ready costs until we hear back from GA Power about out permits.
- VC3, Inc. has billed The City and HATT \$197,088.42 for the hardware and services.
- There will be a request for payment from the City and HATT to GTA (Georgia Technology Authority) submitted in the amount of \$197,088.42.

Issues/Concerns

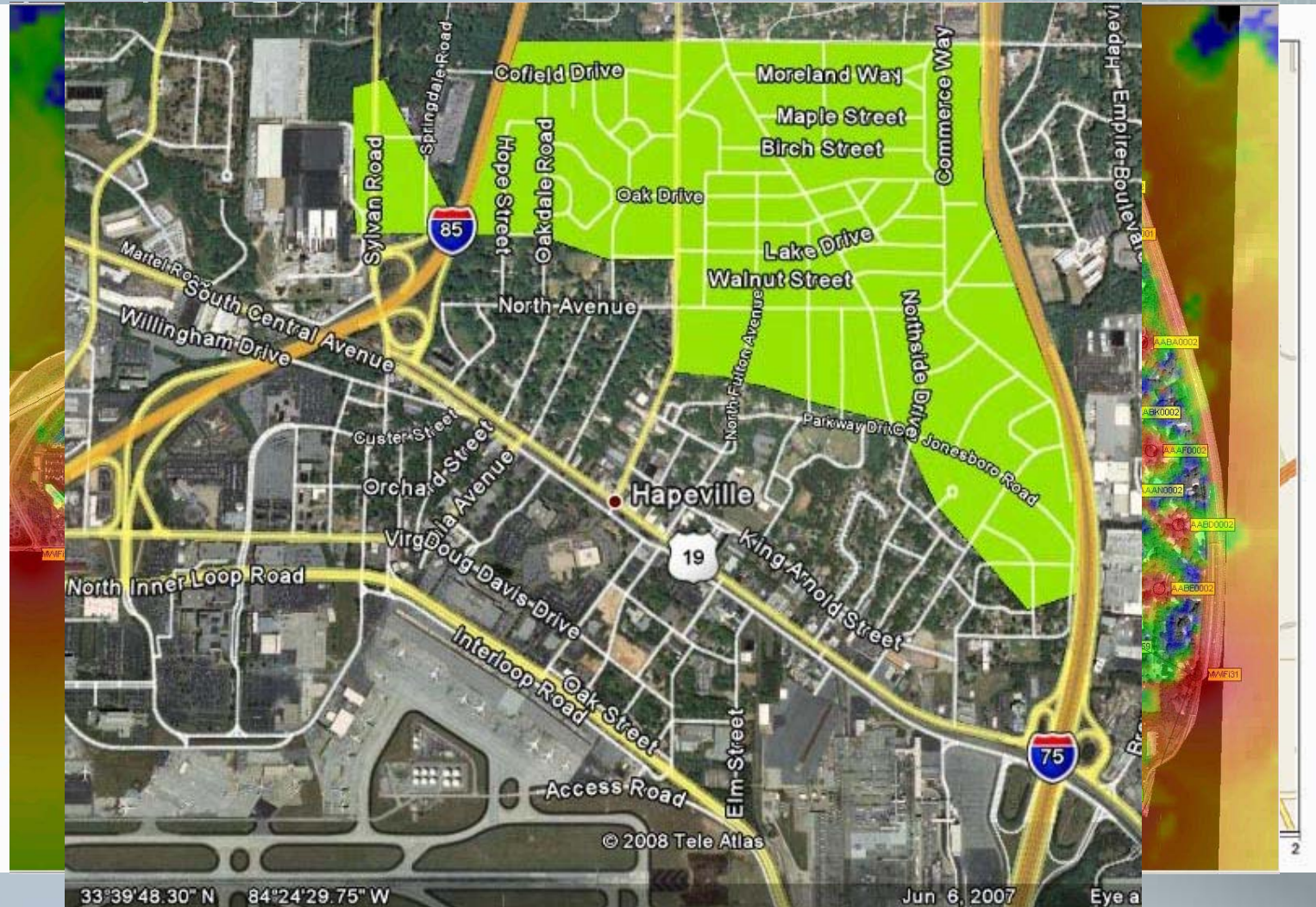
- The space where the installation of the 80 ft tower behind the Police Department may have to be moved due to water mains leading into the building.
- The City and HATT are still waiting for confirmation from Delta's Corporate Real-estate Office for access to their A3/Technology building to deploy a radio on top of it. Delta's legal department is backlogged by about 3 months.
*The initial request was sent in March 2008 and from the last contact date of July 2nd we have been told that it will be another 30 days before they will be able to review the contract.

Phase B (North Side Proposal)

- Coverage area is approximately 1.25 miles.
- Phase B will cover all areas up to the northern boarder of the City; North Ave to Mount Zion.



Phase B Proposed Design



Phase B Proposed Design

- Phase B requires more Access Points than Phase A due to the foliage in certain areas of the City.
- 64 Cisco Aironet 1520 Series MAPs
- 15 Cisco Aironet 1520 Series RAPs
- There will be 11 20ft Aluminum Poles installed instead of using Ga Power poles in certain locations.

Budget for Phase B

Capital Expenditures:

	Cisco Hardware Total	\$ 213,532.85
	Backbone Equipment Total	\$ 5,240.00
	Ancillary Equipment Total	\$ 15,460.00
	Extended Warranty Total (Cisco)	\$ 28,079.00
	VC3 Hours (Installation Included)	\$87,500
	Subcontractor MAP Installation	\$22,400
	Subcontractor RAP Installation	\$7,508
	Tower and Aluminum Poles	\$3,300
	Phase 2 Project Total	\$ 383,019.35

The total does not include \$10,200.00 for GA Power Pole Applications, which would bring the total to \$393,219.35

Deployment Options

- The timeline for building the network out would be close to a year depending on GA Power's pole applications reviews.

Option 1: Extend the timeline of the project to better absorb the costs.

Option 2: Consider redesigning the network .

Questions and Comments

